

Week beginning 21<sup>st</sup> March 2022

Test week: Tests are in our folders

Fiction

Non-fiction

Poetry

# You Will Be Found

<https://www.youtube.com/watch?v=00MMGfPrNIU>

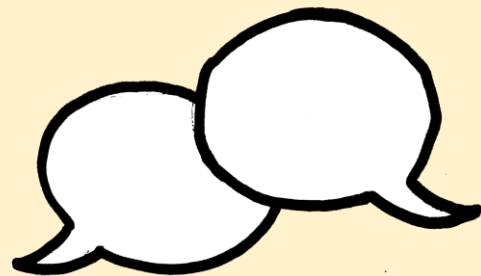


You will be Found -  
From the Musical “Dear  
Evan Hansen”

Let's listen and read along with the lyrics

Ben Platt, Kristolyn Lloyd, Will Roland,  
Laura Dreyfuss & Original Broadway  
Cast Of Dear Evan Hansen - You Will Be  
Found Lyrics | AZLyrics.com

## Partnered Talk



**Explain why you think the singer asks multiple questions at the beginning of the song.**

**You will be Found - From the Musical “Dear Evan Hansen”**

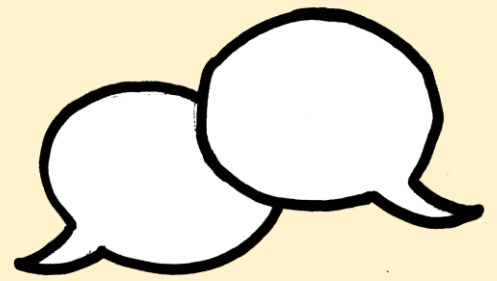
**Individual Thinking**



**The theme of ‘hope’ is evident throughout this song.**

**Find and copy any words or phrases you think show the theme of hope.**

## Partnered Talk



***‘Even when the dark comes crashing through’***

**What do you think the dark represents?**

## Individual Thinking



*'And every time that you call out  
You're a little less alone'*

What do you think this line means?

Is this an easy thing to do?

## Individual Thinking

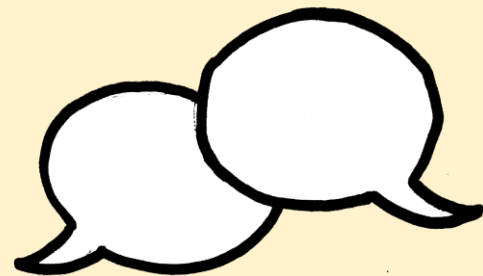


How might someone feel after listening to this song?

Explain why you think this using evidence from the text.



## Partnered Talk

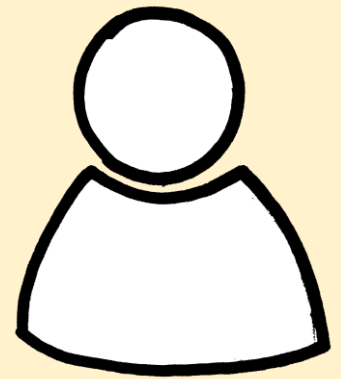


Is this song happy or sad?

Is there a way to say it is both?

Explain your answer fully using evidence from  
the text.

Solo Work



*'You Will Be Found'*

Explain what the title of this song **means to you**,  
in 30 words or fewer.

Can you think of any other alternative titles it  
could have?